

Customer :

customer

Customer part :

customer part

Comment :

Comment

S1=1.65

S2=2.18

Tmax=457

Tp S2=496.0

PI=0.43

HI=114

Sample =1660.60

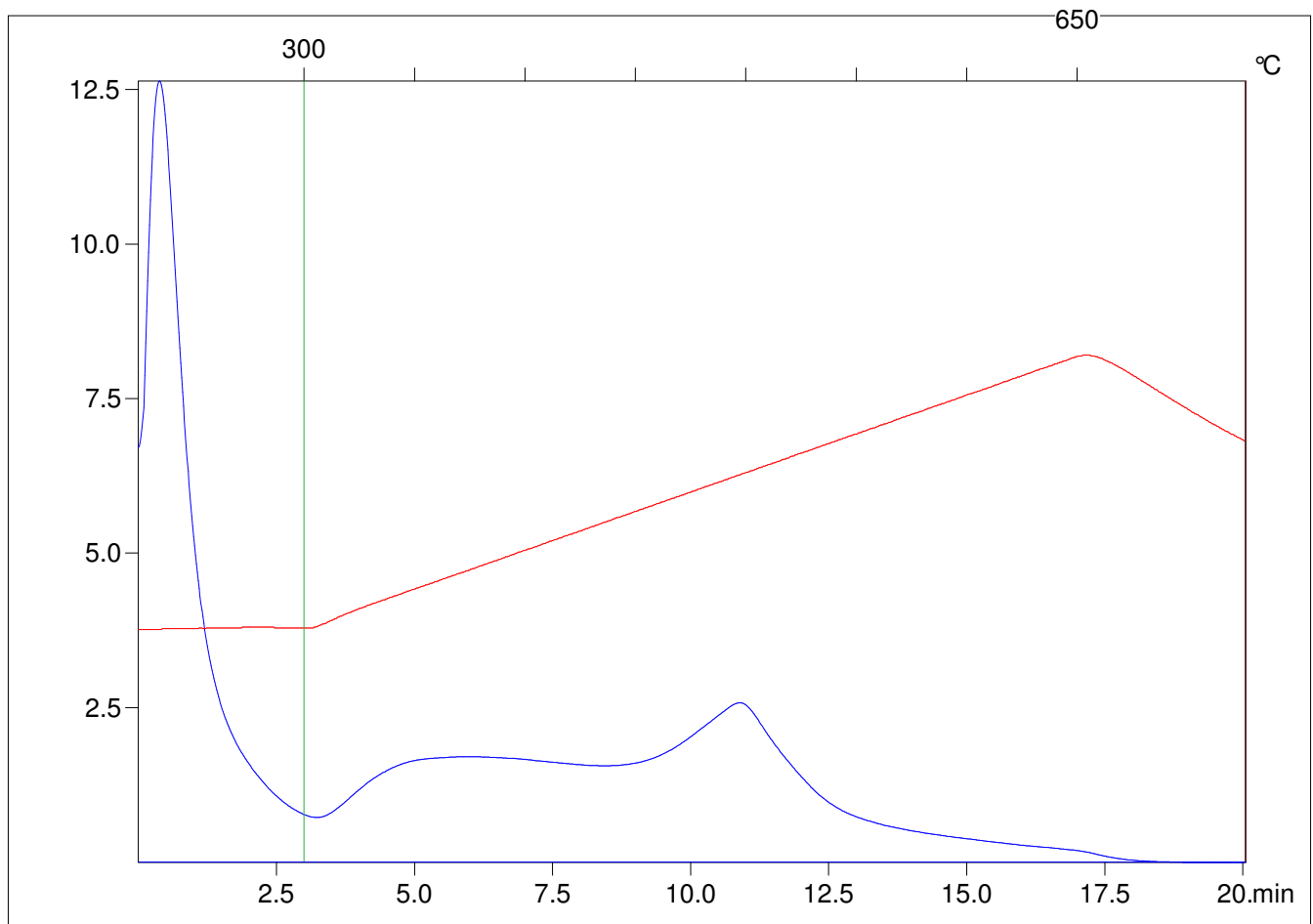
Method =Bulk Rock

Cycle=Basic

KFID(10*9)=1444

Qty =70.2

TOC=1.91



C:\VINC\PK1792\PK089.R00 : FID pyrolysis graphic

State

Pyro Status

Oxi Status